

IBERE NAKAMURA

height 6'0.5 · bust 35.5" · waist 30.5" · hips 36" · suit 48
shoes size 42 EU/11 US/7.5 UK · hair black · eyes brown



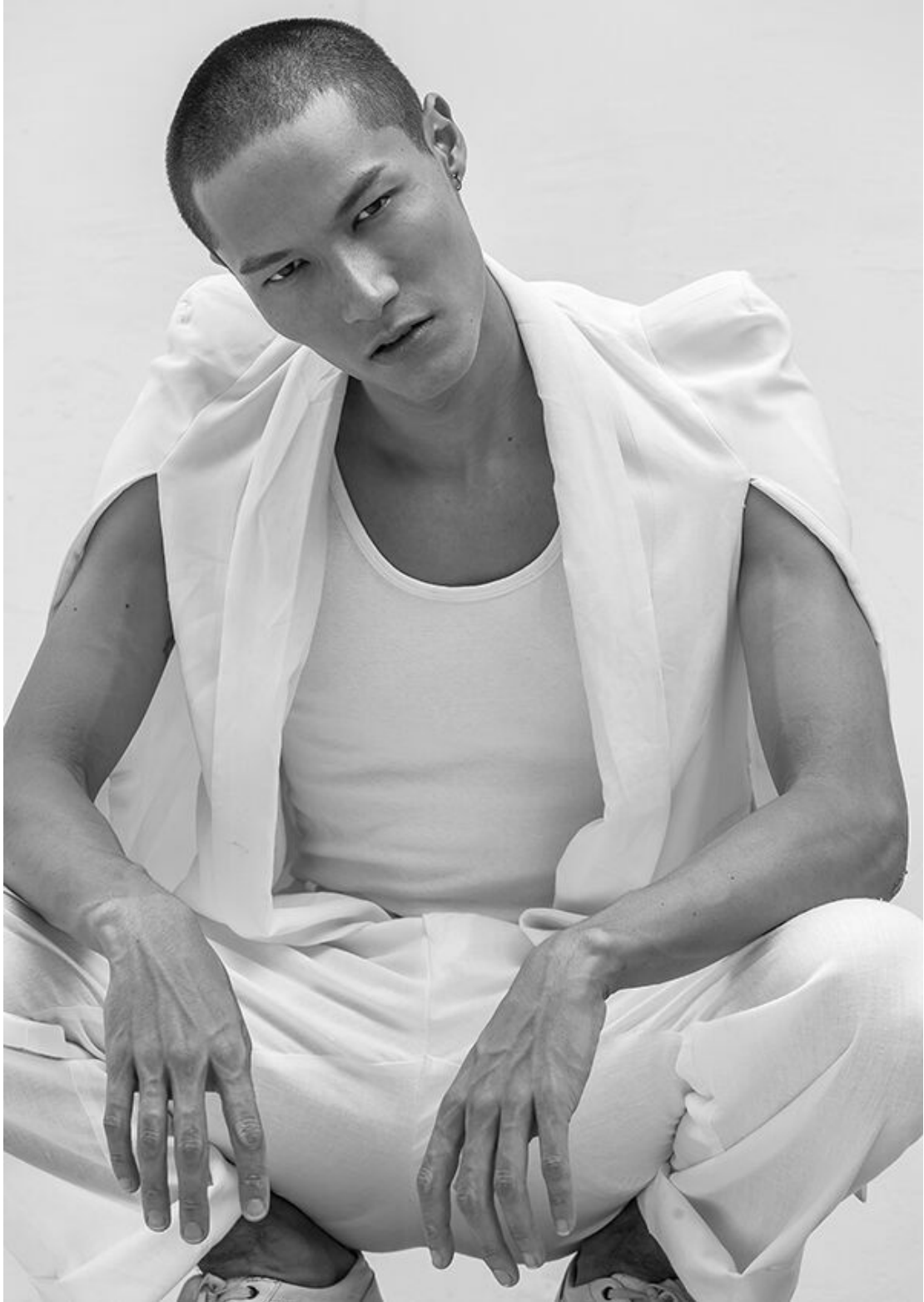
IBERE NAKAMURA

height 6'0.5 · bust 35.5" · waist 30.5" · hips 36" · suit 48
shoes size 42 EU/11 US/7.5 UK · hair black · eyes brown



IBERE NAKAMURA

height 6'0.5 · bust 35.5" · waist 30.5" · hips 36" · suit 48
shoes size 42 EU/11 US/7.5 UK · hair black · eyes brown



IBERE NAKAMURA

height 6'0.5 · bust 35.5" · waist 30.5" · hips 36" · suit 48
shoes size 42 EU/11 US/7.5 UK · hair black · eyes brown

GOQ

PARA ATUALIZAR

Coletes já são os favoritos quando se quer, ainda que de forma sutil, dar um toque diferente ao visual. Os de gorro podem ser ainda mais divertidos

Colete R\$ 597 e camiseta R\$ 347 **Osklen** | Calça **Pair** preço sob consulta | Tênis **Adidas** R\$ 449,99 | Óculos **Tommy Hilfiger** R\$ 479 | Patinete **Zero 10** R\$ 10.790



OUTONO ESPORTIVO

Está aberta a temporada das parcas, cores quentes, shapés firmes e retilíneos - tudo com fôlego tecnológico e utilitário Fotos **Pedro Dimitrow** Styling **Gabriel Feriani**

IBERE NAKAMURA

height 6'0.5 · bust 35.5" · waist 30.5" · hips 36" · suit 48
shoes size 42 EU/11 US/7.5 UK · hair black · eyes brown



IBERE NAKAMURA

height 6'0.5 · bust 35.5" · waist 30.5" · hips 36" · suit 48
shoes size 42 EU/11 US/7.5 UK · hair black · eyes brown

HÍBRIDO

Em tempos de intempéries, a tecnologia se une ao utilitarismo resultando em jaquetas e parcas funcionais e, ao mesmo tempo, esteticamente atraentes

Da esq. para dir.: Parca **Lacoste** R\$ 5,499 | Camisa **Louis Vuitton** preço sob consulta | Óculos **Marc Jacobs** para **Safilo** preço sob consulta | Botas **Gucci** preço sob consulta | Parca **Ermenegildo Zegna** preço sob consulta | Calça **Pair** preço sob consulta | Botas **Ricardo Almeida** R\$ 789 | Óculos **Marc Jacobs** para **Safilo** R\$ 880



IBERE NAKAMURA

height 6'0.5 · bust 35.5" · waist 30.5" · hips 36" · suit 48
shoes size 42 EU/11 US/7.5 UK · hair black · eyes brown



IBERE NAKAMURA

height 6'0.5 · bust 35.5" · waist 30.5" · hips 36" · suit 48
shoes size 42 EU/11 US/7.5 UK · hair black · eyes brown



Design: Armani, foto: Stefano Facca

IBERE NAKAMURA

height 6'0.5 · bust 35.5" · waist 30.5" · hips 36" · suit 48
shoes size 42 EU/11 US/7.5 UK · hair black · eyes brown



IBERE NAKAMURA

height 6'0.5 · bust 35.5" · waist 30.5" · hips 36" · suit 48
shoes size 42 EU/11 US/7.5 UK · hair black · eyes brown

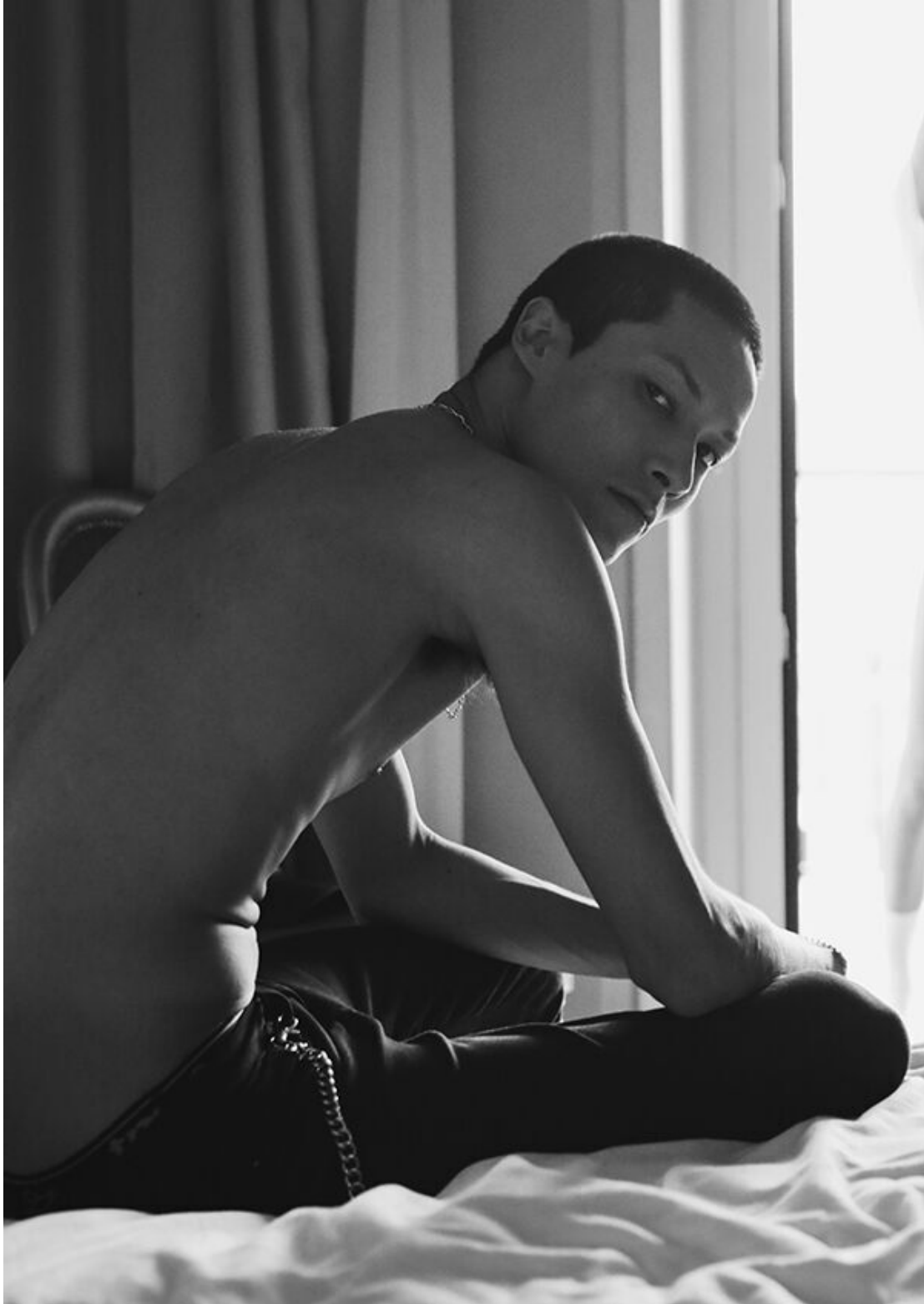


MGM
MODELS

MGM
MODELS

IBERE NAKAMURA

height 6'0.5 · bust 35.5" · waist 30.5" · hips 36" · suit 48
shoes size 42 EU/11 US/7.5 UK · hair black · eyes brown



IBERE NAKAMURA

height 6'0.5 · bust 35.5" · waist 30.5" · hips 36" · suit 48
shoes size 42 EU/11 US/7.5 UK · hair black · eyes brown



IBERE NAKAMURA

height 6'0.5 · bust 35.5" · waist 30.5" · hips 36" · suit 48
shoes size 42 EU/11 US/7.5 UK · hair black · eyes brown



IBERE NAKAMURA

height 6'0.5 · bust 35.5" · waist 30.5" · hips 36" · suit 48
shoes size 42 EU/11 US/7.5 UK · hair black · eyes brown



IBERE NAKAMURA

height 6'0.5 · bust 35.5" · waist 30.5" · hips 36" · suit 48
shoes size 42 EU/11 US/7.5 UK · hair black · eyes brown



IBERE NAKAMURA

height 6'0.5 · bust 35.5" · waist 30.5" · hips 36" · suit 48
shoes size 42 EU/11 US/7.5 UK · hair black · eyes brown



IBERE NAKAMURA

height 6'0.5 · bust 35.5" · waist 30.5" · hips 36" · suit 48
shoes size 42 EU/11 US/7.5 UK · hair black · eyes brown



IBERE NAKAMURA

height 6'0.5 · bust 35.5" · waist 30.5" · hips 36" · suit 48
shoes size 42 EU/11 US/7.5 UK · hair black · eyes brown



IBERE NAKAMURA

height 6'0.5 · bust 35.5" · waist 30.5" · hips 36" · suit 48
shoes size 42 EU/11 US/7.5 UK · hair black · eyes brown

